

# *Bejeweled* collection



LORI WEITZNER  
*for* SAMUEL & SONS





*Shown left to right: 5/8" Orion Studded Border and 1.5" Orion Studded Border in Pewter*

**SAMUEL & SONS**, the premier trimming destination presents Bejeweled designed by Lori Weitzner. Heirloom jewels are re-imagined in Bejeweled, a luxurious selection of tapes, cords and holdbacks featuring lustrous metals, artisanal hand-embroidery, and stunning beadwork. The original handmade designs pay homage to classically ancient techniques including metal beading, pearl and stud embroidery and timeless French knots.

Orion is a hand-embroidered, studded tape. The application of studs has been around for centuries, first appearing on the armor of ancient cultures. Orion is a modern day interpretation of this time honored technique.



*5/8" Orion Studded Border in Pewter*

*Charmer implements fluid rows of metal beading sewn on a silk satin ground with lustrous metallic thread. Each piece is hand-embroidered creating an intricate motif that undulates throughout the trim.*

*Shown from top to bottom:  
Artemis Glass Beaded Border in Nickel  
and Honey, Whitney Cord with Tape in Silver  
and Charmer Embroidered Border in Frost*



*Pearls never go out of style. Drawing upon the classic beauty of Jackie O, Audrey Hepburn, and their penchant for pearl necklaces, Juliette is embellished by hand with pearls and metallic thread.*

*Inspired by intricate surfaces and techniques of Fabergé eggs, Artemis is a hand-embroidered tape that luxuriously dazzles in the light. Delicate beads are sewn on with metallic threads, giving this tape added glamour.*

*A mixture of matte and metallic threads are wrapped together to form the elegant Whitney cord.*

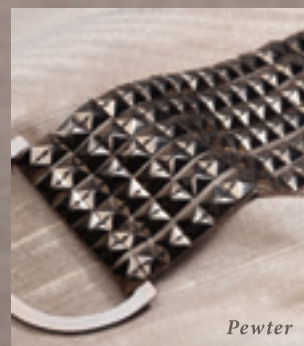


**LORI WEITZNER**, principal and creative director of her eponymous New York-based studio, is internationally known for her contributions to the world of textiles. After designing collections for such brands as Sahco and Larsen, Lori is at the helm of her own innovative textile and wallcovering company, Weitzner Ltd. Over the past thirty years, she has translated her signature aesthetic and sophisticated color sense into a range of products, including bedding, dinnerware, rugs, and stationery. Her work belongs to the permanent collections of such museums as the Cooper Hewitt, Les Art Decoratif and London's Victoria Albert. Known for combining modern techniques with unconventional materials, Lori's work appeals to the senses, creating spaces that inspire the mind and nurture the soul.

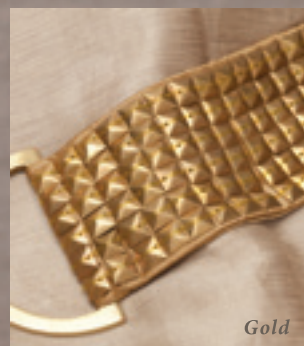
*Shown from top to bottom: Juliette Pearl Border in Pearl, Artemis Glass Beaded Border in Nickel and Whitney Cord with Tape in Silver*



*The Orion Holdback adds timeless glamour to any curtain. Orion is adorned with studs embroidered by hand onto the cotton-silk surface and finished with coordinating metallic clasps.*



*Pewter*



*Gold*

*Orion Studded Holdback in Platinum*



*Shown top to bottom: Astra Embroidered Border in Amethyst and Royal Blue*



*Astra is a glamorous yet unassuming tape featuring hand-sewn matte sequins using the age-old French knot technique. The embroidery forms multicolored circular motifs that cheerfully and elegantly repeat across its surface.*

*Shown left to right: Astra Embroidered Border in Acanthus and Denim*



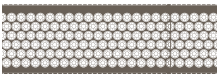
Shown left to right:  
Whitney Cord with Tape in Tiger's Eye  
and Artemis Glass Beaded Border in Honey

## Bejeweled Collection



**CT-57038 1/4" (6.35mm)**  
**Whitney Cord with Tape**

Available in: Moonstone, Diamond,  
Silver, Mineral, Tortoise Shell, Ginger,  
Spice, Seafoam, Tiger's Eye, Pond



**BT-57030 1.5" (38mm)**  
**Artemis Glass Beaded Border**

Available in: Nickel, Jet, Copper, Honey



**BT-57034 1.5" (38mm)**  
**Juliette Pearl Border**

Available in: Pearl



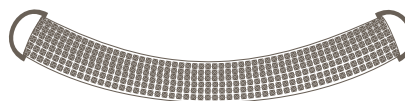
**BT-57035 5/8" (16mm)**  
**5/8" Orion Studded Border**

Available in: Gold, Platinum, Pewter



**BT-57036 1.5" (38mm)**  
**1.5" Orion Studded Border**

Available in: Gold, Platinum, Pewter



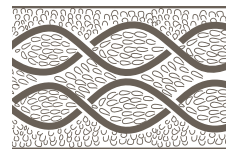
**TT-57037 Spread: 27" (69cm)**  
**Orion Studded Holdback**

Available in: Gold, Platinum, Pewter



**BT-57031 2.25" (57mm)**  
**Astra Embroidered Border**

Available in: Ivory, Acanthus, Charcoal,  
Driftwood, Cinnamon, Royal Blue, Amethyst,  
Rhubarb, Denim, Celery, Aegean



**BT-57033 3" (76mm)**  
**Charmer Embroidered Border**

Available in: Lily, Frost, Amber, Twilight

Special thanks to our industry partners

Fabrics & wallcoverings: Weitzner | Bench: Edward Ferrell + Lewis Mittman | Wingback Armchair: Artistic Frame

USA 212.704.8000  
EUROPE +44.020.7351.5153  
WWW.SAMUELANDSONS.COM

**LORI WEITZNER**  
for SAMUEL & SONS

